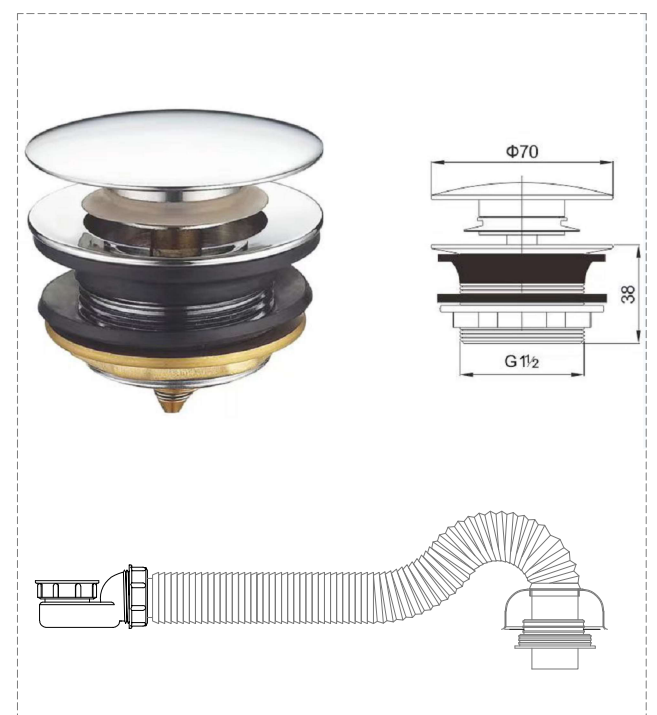
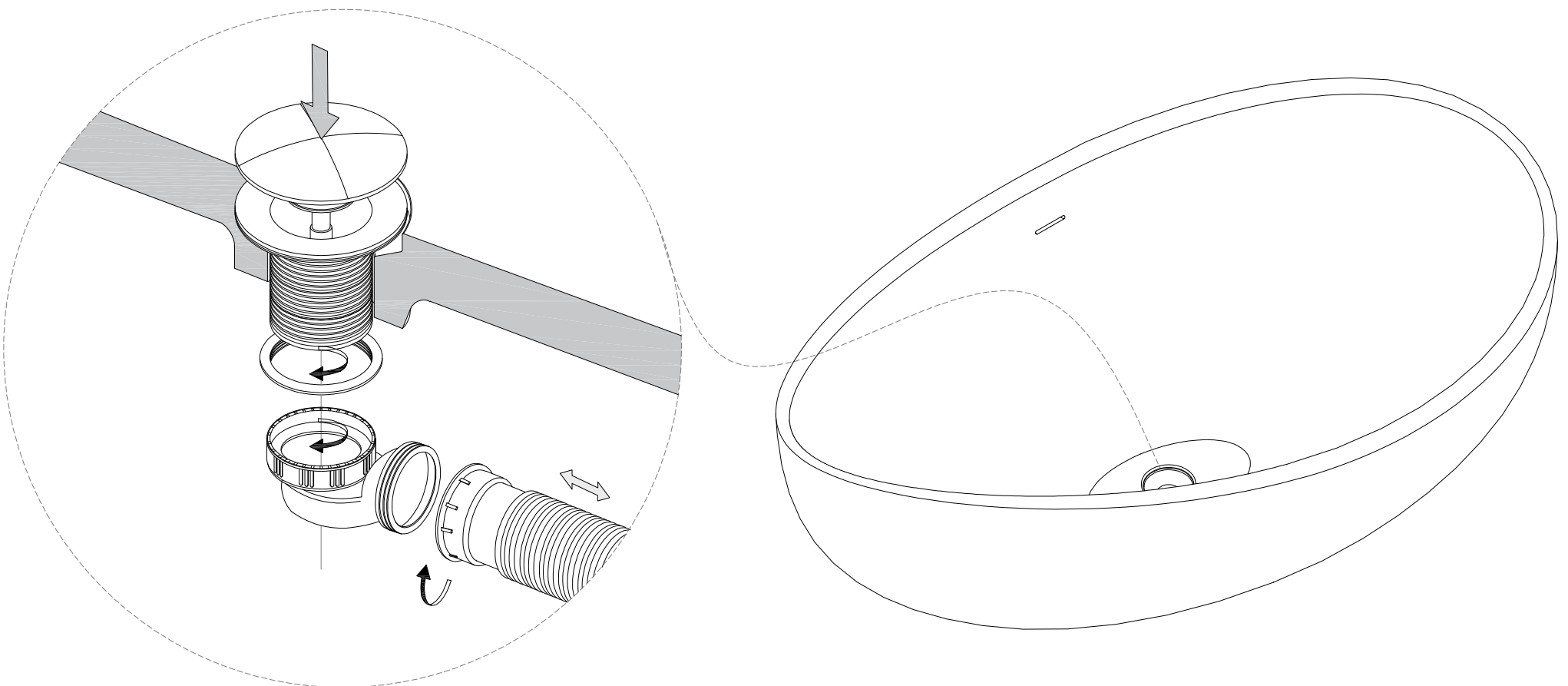
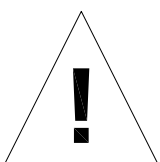


## Important:

1. Please unwrap the bath and check it carefully to ensure it has not been damaged in handling or transport.
2. Please check that all parts have been supplied.
3. Assemble bath on a mat to protect against damage to bath surface.
4. Any installation should be carried out by a qualified tradesman with knowledge of statutory plumbing requirements in your area.
5. This installation guide does not include details of waste connection; final decision about installation of waste connection & cutout allowance in floor for connection, should be taken by a suitably qualified person.



Description: Bathtub accessories including drain, hose.



After connecting the waste pipe to the trap, check the bath for leaks. To do this, fill the bath halfway and then release the waste.

Article: OL5018

Overflow: Yes

Flow rate: 0.63 L/s

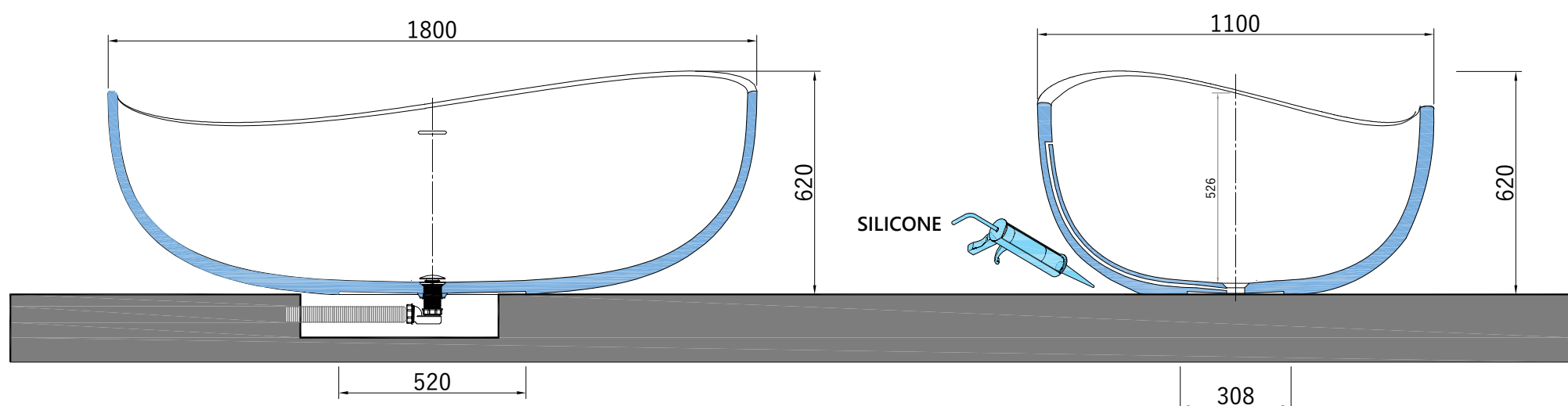
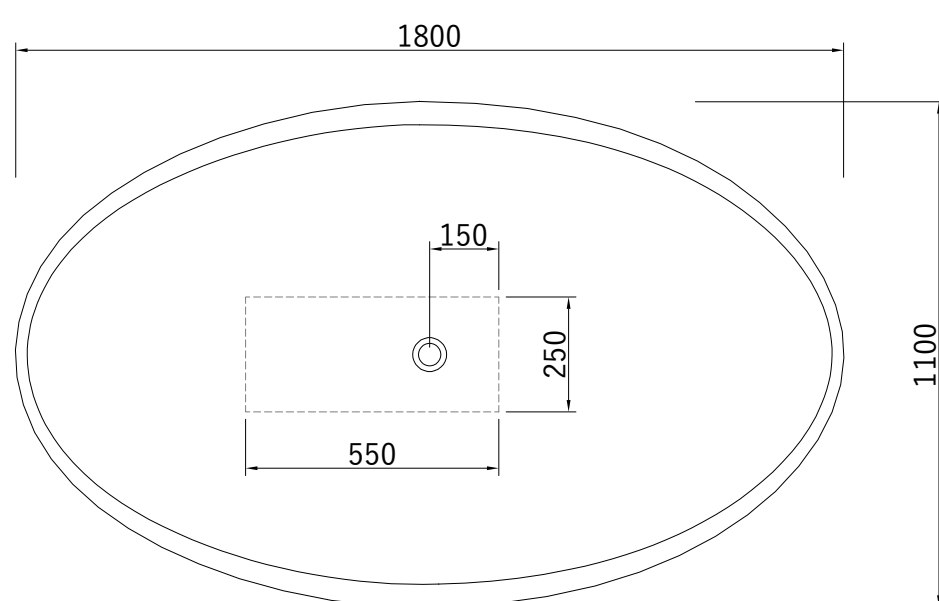
Gross weight: approx. 260 kg

Net weight: approx. 220 kg

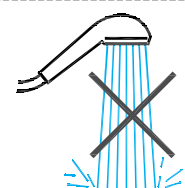
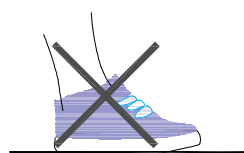
Product Dimensions: 1800 x 1100 x 620 mm

Packaging dimensions: 1900 x 1200 x 720 mm

Capacity: approx. 488 L



N.B. For correct installation, we recommend using polyurethane foam between the bathtub and the floor.



N.B. We provide a guarantee and assume responsibility only if the installation is completed according to the installation instructions.

[www.bathtub8.com](http://www.bathtub8.com)

Email: [antonytaylor9514@gmail.com](mailto:antonytaylor9514@gmail.com)

### Care and Maintenance:

- . Repairing a Scratch: With the Bath in a dry condition, first use the hand sander block and sandpaper provided (320-400 grit).
- . Apply the paste to the bath and then in a circular motion start sanding process.
- . To finish, use finer grit sandpaper (1500-2000 grit).
- . Finish off any excess with cotton cloth.

### Everyday cleaning

- . For general cleaning use soapy water or an approved cleaner for solid surfaces.
- . For a deeper periodic clean, to maintain the matte surface use the Kado Solid Surface Care Maintenance Kit supplied with this bath.
- . When dust and dirt appears on the surface that general cleaning does not fully remove, the solid surface Cleaning and Maintenance paste can be used.
- . Damage caused by any improper treatment is not covered by the product warranty. Refer to Warranty Conditions.

### Care Details

We recommend the use of soapy water or approved cleaners. This product should not be cleaned with abrasive materials. Damage caused by any improper treatment is not covered by the product warranty, Refer to Warranty Conditions

**Plumbers, please ensure a copy of the installation instruction is left with the end user for future reference.**

**N.B. We provide a guarantee and assume responsibility only if the installation is completed according to the installation instructions.**